

# Western NSW Primary Health Network

## GPACI Information Sheet for General Practice

### What is General Practice in Aged Care Incentive (GPACI)?

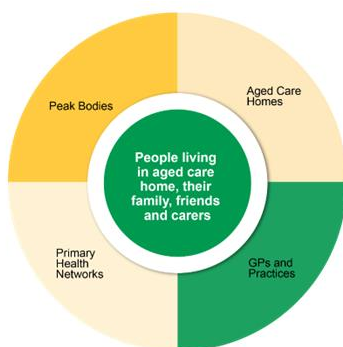
The Department of Health and Aged Care developed the General Practice in Aged Care Incentive in response to recommendations from the Royal Commission into Safety and Quality in Aged Care and Strengthening Medicare Taskforce to improve access to primary care and other health services.

The incentive aims to support general practitioners (GPs) and practices to deliver more proactive, planned, and continuous care to people living in residential aged care homes.

### Key groups involved in GPACI

A number of key groups have important roles in supporting the implementation of the incentive. To support the delivery of high-quality care it is important that all groups work together well and contribute to their roles and responsibilities.

As part of the incentive, all groups have a shared purpose to ensure people who live in aged care homes have access to quality primary care and other health services.



### GPs, care teams and practices

To be eligible for incentive payments, GPs and practices must meet the eligibility requirements and deliver services in line with GPACI servicing requirements.

Nurse practitioners, GP registrars, practice nurses, and Aboriginal Health practitioners, or workers linked to the same registered practice, may deliver some of the required services in partnership with the GP, also known as the 'responsible provider'.

Practices will support GPs and the care team with this incentive by providing planning, coordination and administrative functions. Practices will also support the registration of aged care residents in MyMedicare and GPACI.

### Primary Health Networks (PHNs)

PHNs are regionally based, independent organisations funded by the department to commission, coordinate and build capability across primary health care services in their regions. This includes building connections and strengthening collaboration between GPs and practices and aged care homes.

PHNs support the implementation of MyMedicare and GPACI. They play a critical role in:

- communicating with residential aged care homes, informing and equipping staff to promote the incentive and support clear communication to their residents and resident families
- supporting interested or participating GPs and practices to implement the incentive
- facilitating improved care processes between GPs and practices and aged care homes to ensure the provision of proactive, planned and continuous care.



To learn more about GPACI scan here to watch “**Detailed video on GPACI and service and eligibility requirements**”

For more GPACI information & assistance please contact:

**Kate Astill**

**Integration Officer Aged and Palliative Care**

Western NSW Primary Health Network

M | 0472 781 528

E | [kate.astill@wnswphn.org.au](mailto:kate.astill@wnswphn.org.au)